



## HoseGuard®-Highlights:

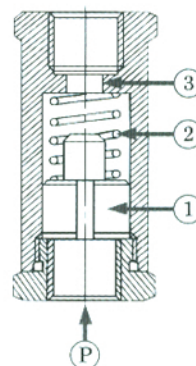
- Protects personnel, machinery and plant
- Maintenance friendly - repair possible while plant is still operating
- Economic: no unnecessary repairs
- Complies with EU standard EN 983, § 5.3.4.3.2\*
- Competitive pricing
- No adjustment necessary
- Reliable and tamperproof
- Light weight - compact size
- Compatible with all pneumatic systems
- Can be used as a flow controller

## Function Overview

The inlet is marked "P". The air flows over piston (1) and continues through seat (3). The flow of air over the piston is slowed by several longitudinal grooves on the exterior of the piston.

If the flow becomes excessive, the current of air cannot flow over the piston quickly enough. The piston is then pressed against spring (2) beneath it, and toward the seat.

Refer to the drawing on this page. The peak flow rates are shown in the plots. If the indicated value is exceeded, for example if the hose suddenly breaks, the supply of air is automatically shut off.



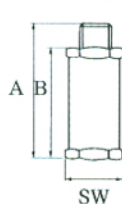
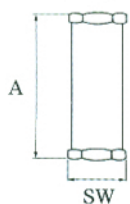
## Technical Data:

Thread connect.	Dimensionen (mm)			Weight (g)	Maximum inlet pressure	Temperature range	Materials	P1-inlet thread	P2-inlet thread	Type No.	
	A	B	SW								
BSP					18 bar (255 PSIG)	"-20° til 80° C	Housing: Aluminium	Female	Female	281 A0211	
1/4"	48	-	22	30g				Male	Female	281 A0221	
1/4"	58	49	22	36g				"-4° til 176° F	Piston: Polyacetat	Female	Female
3/8"	59	-	27	58g			Male			Female	281 A0321
3/8"	71	59	27	62g			Female			Female	281 A0411
1/2"	65	-	30	78g			"-20° til 120° C	Piston: Aluminium	Male	Female	281 A0421
1/2"	80	65	30	85g		Female			Female	281 A0511	
3/4"	76	-	30/36	107g		Female			Female	281 A0611	
1"	100	-	41/50	300g		Female		Female	281 A 0911		
2"	130	-	70/80	775g							

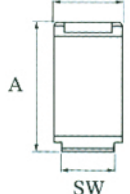
Thread connection NPT upon request

1/4", 3/8", 1/2"

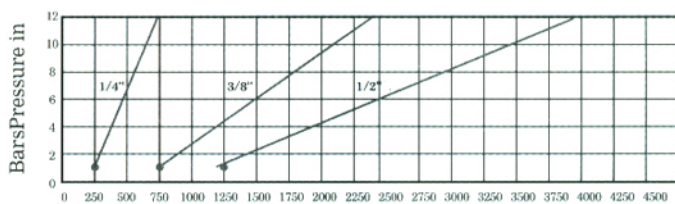
1/4", 3/8", 1/2"



3/4", 1", 2"



HoseGuard® (1/4, 3/8 and 1/2") Flow Rates. L/min



Hoseguard® (3/4", 1" and 2") Flow Rates. L/min

